

# Overload protection with clamping hub

*for all  
chain drives  
belt drives*



**NEW  
NEW · NEW  
NEW  
NEW · NEW**

## **ROBA<sup>®</sup>-clamp**

*load holding torque limiter*

- *Easy fast assembly*
- *Safe, keyless clamping hub*
- *Economic and reliable*
- *Suitable for high friction work and high torque capacities*

[www.mayr.de](http://www.mayr.de)

P.106.02.GB

**mayr<sup>®</sup>**  
your reliable partner

## ROBA<sup>®</sup>-clamp

### Clamping hub load holding overload protection for all chain and belt drives

#### Characteristics and advantages

- Very easy fast assembly  
with a single locking screw**
- Safe torque transmission  
via keyless clamping hub**
- Economic and reliable**
- Suitable for high friction work and  
high torque capacities**



Example: ROBA<sup>®</sup>-clamp with fitted chain-sprocket  
(dimensions on request).

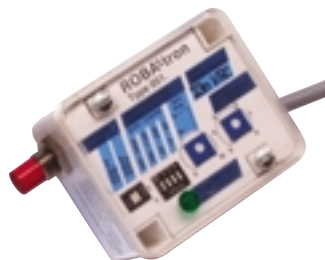
#### Protection for expensive machinery components

The ROBA<sup>®</sup>-clamp is used as overload protection for machine drives with chain sprockets or belt pulleys. It is used wherever expensive, sensitive motors, transmission units or machinery components require protection against overloads. Should an overload occur, the drive element slips and, therefore, limits the torque. The ROBA<sup>®</sup>-clamp is used in packing machines, conveyors and material handling systems and equipment, construction machinery, textile machinery, agricultural machinery, in equipment for the chemical industry together with general engineering machinery.

#### ROBA<sup>®</sup>-tron speed monitor

The ROBA<sup>®</sup>-tron monitors „increasing“ or „decreasing“ speeds. If the adjusted speed is achieved, the ROBA<sup>®</sup>-tron will signal the drive “off” or it is used for another control function. A signal is transmitted when the control flag passes through the initiator zone and is compared with the pre-set switch-off speed.

Please request separate documents for detailed information.



#### Function

The drive element (chain-sprocket or V-belt pulley) is put onto the bearing bushing and clamped between the friction linings by means of the thrust washer, cup springs and the adjusting nut. The stronger the cup spring is pressed together by the adjusting nut, the higher is the torque, with which the drive element slips through. An exact adjustment of the torque is described in the installation and operating instructions.

#### Rule of thumb:

ROBA<sup>®</sup>-clamp Type 106.11\_ for large friction work and low torque (cup springs with single layer, single applied force);

ROBA<sup>®</sup>-clamp Type 106.21\_ for medium friction work and higher torque (cup springs with double layer, double applied force);

ROBA<sup>®</sup>-clamp Type 106.31\_ for small friction work and very high torque (cup springs with triple layer, triple applied force).

#### Simple construction – High quality

The ROBA<sup>®</sup>-clamp is despite its simple construction a high-quality machine component. It is fully machined and phosphated and, therefore, protected against rust. The ROBA<sup>®</sup>-clamp, a rotating component, fits very easily into all drive systems as a result of its smooth construction. It is particularly suitable for attachment to the outside of machines and for those systems which must be kept clean easily. The ROBA<sup>®</sup>-clamp and all other ROBA<sup>®</sup>-slip hubs are designed in such a way that they can be adapted very easily to very varied working conditions, e.g. high slipping frequency and low torque or low friction work and extremely high torque, as well as intermediate stages of torque and friction work, and the desired service life. (see also „rule of thumb“ mentioned below).

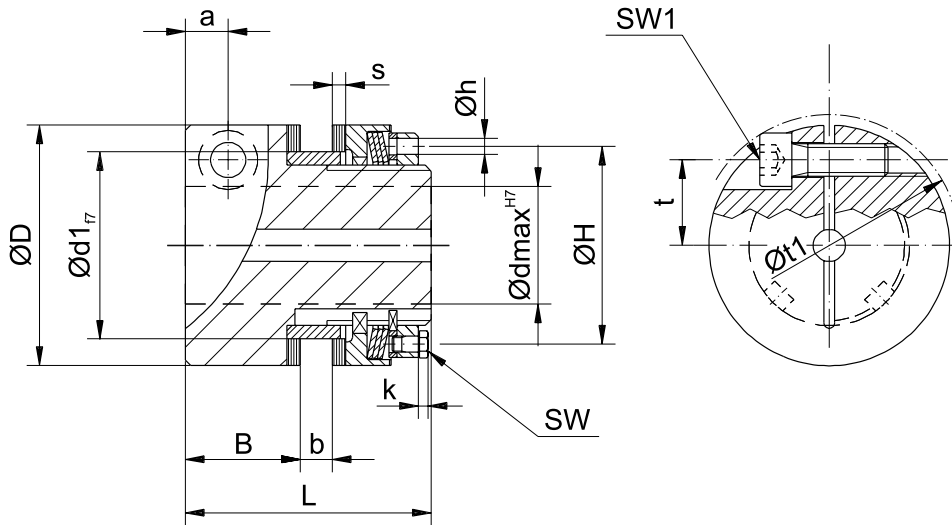
#### ROBA<sup>®</sup>-slip hubs - Quality standard with friction type protective elements

- The short robust hub ensures compact overall dimensions.
- Torque transmission via four wide dogs – absolutely reliable even under shock or reversing load conditions.
- Asbestos free friction linings with a large surface area together with low wear rate ensure a long working life.
- Adjusting nut together with graduation scale for simple torque setting and adjustment for wear.
- Self contained torque adjustment nut assembly preventing unintentional rotation of the adjusting nut and modification of the torque adjustment.
- Low rate cup springs maintain a minimal torque reduction due to wear.
- Alternative spring layers ensure a wide torque range per size.
- Bronze bearing bushing can be shortened to suit the width of the drive element.
- The ROBA<sup>®</sup>-tron overspeed monitor prevents too lengthy slippage of the drive elements or is used to monitor chain breakage on the driven unit.

# ROBA<sup>®</sup>-clamp

Sizes 0 to 2

Type 106.\_\_\_\_



## Technical data and dimensions

Size	Limit torque for overload			Speed rpm		Weight pilot bored kg	Tightening torques for clamping screw SW <sub>1</sub> Nm
	Type 106.11_ Nm	Type 106.21_ Nm	Type 106.31_ Nm	n <sub>max</sub>	max. difference-speed		
0	2 – 10	10 – 20	18 – 30	8500	500	0,5	16
01	6 – 30	30 – 60	60 – 90	6600	500	0,85	41
1	14 – 70	70 – 130	130 – 200	5600	500	1,25	83
2	26 – 130	130 – 250	250 – 400	4300	500	2,3	145

Size	a	B	b <sub>min</sub>	b <sub>max</sub>	D	d <sub>1</sub> H8*	d <sub>min</sub> <sup>3)</sup>		d <sub>max</sub>
							from <sup>5)</sup>	from <sup>6)</sup>	
0	8	21,5	2	6	45	35	7	12	22
01	10	26	3	8	58	40	–	12	25
1	12	30	3	10	68	44	12	20	28
2	14	34	4	12	88	58	15	20	40

Size	H	h	k	L	SW	SW <sub>1</sub>	s	t	t <sub>1</sub>
0	37	3	–	46	2	5	2,5	16	50
01	46	5	–	55	2,5	6	3	19	62
1	50	5	1,3	65	3	8	3	22	74
2	67	6	3	72	10 <sup>1)</sup>	10	3	30	93

\* Fit indication H8 refers to bore of the output element.

We reserve the right to make dimensional and design alterations.

## Order example:

To be included when ordering, please state	Size	Type	Bore Ø d <sup>H7</sup>	Width of the drive element b	With speed monitoring system
Order number:		106.____			

0 ÷ 2

- \* Lower torque range .....1
- \* Medium torque range .....2
- \* High torque range .....3
- Standard friction lining .....1
- Friction lining for oil bath <sup>2)</sup> .....4
- Special low-friction material <sup>4)</sup> .....5
- Adjusting nut standard .....0
- Adjusting nut with radial adjustment .....1

Depending on size; when not stated, we deliver the bearing bushing for maximum overall width b<sub>max</sub>. For smaller drive elements the bearing bushing is shortened.

depending on size

- 1) Hexagon head cap screw DIN 933
- 2) Attainable torque on request 30 % of the Type 106.31\_
- 3) Observe shaft loading
- 4) Only low torque range (Type 106.11\_) permissible. Attainable torque 50 %
- 5) Transmittable limiting torque = 60 % of the Type 106.31\_
- 6) Transmittable limiting torque = 100 % of the Type 106.31\_

**Example:** Order number 2 / 106.210 / 30 / 10

## Worldwide representation

### Headquarters

Chr. Mayr  
GmbH + Co. KG  
Eichenstraße 1  
87665 Mauerstetten  
Tel.: 49-83 41/8 04-241  
Fax: 49-83 41/804422  
<http://www.mayr.de>

### Great Britain

Mayr Transmissions Ltd.  
Valley Road, Business Park  
Keighley, BD21 4LZ  
West Yorkshire  
Tel.: 0 15 35/66 39 00  
Fax: 0 15 35/66 32 61  
[sales@mayr.co.uk](mailto:sales@mayr.co.uk)

### Italy

Mayr Italia S.r.l.  
Viale Veneto, 3  
35020 Saonara (PD)  
Tel.: 0 49/8 79 10 20  
Fax: 0 49/8 79 10 22  
[info@mayr-italia.it](mailto:info@mayr-italia.it)

### France

Mayr France S.A.  
Z.A.L. du Minopole  
BP 16  
62160 Bully-Les-Mines  
Tel.: 03.21.72.91.91  
Fax: 03.21.29.71.77  
[contact@mayr.fr](mailto:contact@mayr.fr)

### Switzerland

Mayr Kupplungen AG  
Tobeläckerstrasse 11  
8212 Neuhausen  
am Rheinflall  
Tel.: 0 52/6 74 08 70  
Fax: 0 52/6 74 08 75  
[info@mayr.ch](mailto:info@mayr.ch)

### USA

Mayr Corporation  
4 North Street  
Waldwick  
NJ 07463  
Tel.: 2 01/4 45-72 10  
Fax: 2 01/4 45-80 19  
[info@mayrcorp.com](mailto:info@mayrcorp.com)

### Singapore

Mayr Transmission (S)  
Pte. Ltd. – Blk 133  
Jurong East Street 13  
Unit 03-291  
Singapore 600133 Asean  
Tel.: 0065/6560 1230  
Fax: 0065/6560 1000  
[info@mayr.com.sg](mailto:info@mayr.com.sg)

### Korea

Mayr Korea  
60-11, Woongnam-Dong  
ROK Changwon  
Rep. of Korea  
Tel.: 055/262-4024  
Fax: 055/262-4025  
[info@mayrkorea.com](mailto:info@mayrkorea.com)

### Taiwan

(for machine tool manuf.)  
German Tech Auto Co. Ltd.  
No. 58, Wu Chuan Road  
Wu-Ku Industrial Park  
Taipei Hsien, Taiwan  
Tel.: 02/22990237  
Fax: 02/22990239  
[steve@zfgta.com.tw](mailto:steve@zfgta.com.tw)

### China

Driveline Technology  
Components Co. Ltd.  
1699 East Zhulu Road  
Xujing Industrial Zone  
201700 Shanghai  
Tel.: 021/59883978  
Fax: 021/59883979  
[dtcshanghai@online.sh.cn](mailto:dtcshanghai@online.sh.cn)



### Australia

Transmission Australia Pty. Ltd.  
Trading As Reynolds Dynamics  
1B, 310-312 Boundary Road  
3172 Dingley, Victoria  
Australien  
Tel.: 039/551 6633  
Fax: 039/551 6725  
[sales@reynoldsdynamics.com.au](mailto:sales@reynoldsdynamics.com.au)

### New Zealand

Saeco A.D.I.Ltd.  
36 Hastie Avenue  
Mangere East  
P. O. Box 22-256  
Otahuhu-Auckland  
Tel.: 09/634 7540  
Fax: 09/634 7552  
[grant@saeco.co.nz](mailto:grant@saeco.co.nz)

### India

National Engineering  
Company (NENCO)  
J-225, M.I.D.C. Bhosari  
Pune 411 026  
Tel.: 0202/7474529  
Fax: 0202/7470229  
[nenco@vsnl.com](mailto:nenco@vsnl.com)

### Japan

Shinwa Trading Co. Ltd.  
1-3, 3-Chome  
Goko-Dori, Chuo-ku  
Kobe City  
Tel.: 078/2512311  
Fax: 078/2652676  
[ohta@shinwa-kobe.co.jp](mailto:ohta@shinwa-kobe.co.jp)

### South Africa

Torque Transfer  
Private Bag 9  
Elandsfontein 1406  
Tel.: 011/3458000  
Fax: 011/3922561  
[torque@bearings.co.za](mailto:torque@bearings.co.za)

Austria

Benelux States

Brazil

Canada

Czech Republic

Denmark

Finland

Greece

Hongkong

Hungary

Indonesia

Israel

Malaysia

Norway

Philippines

Poland

Russia

Slovakia

Slovenia

Spain

Sweden

Thailand

Turkey

Note:

If a country is not shown, please refer to headquarters or our web site to be advised of the nearest responsible agent.

**mayr**<sup>®</sup>  
your reliable partner